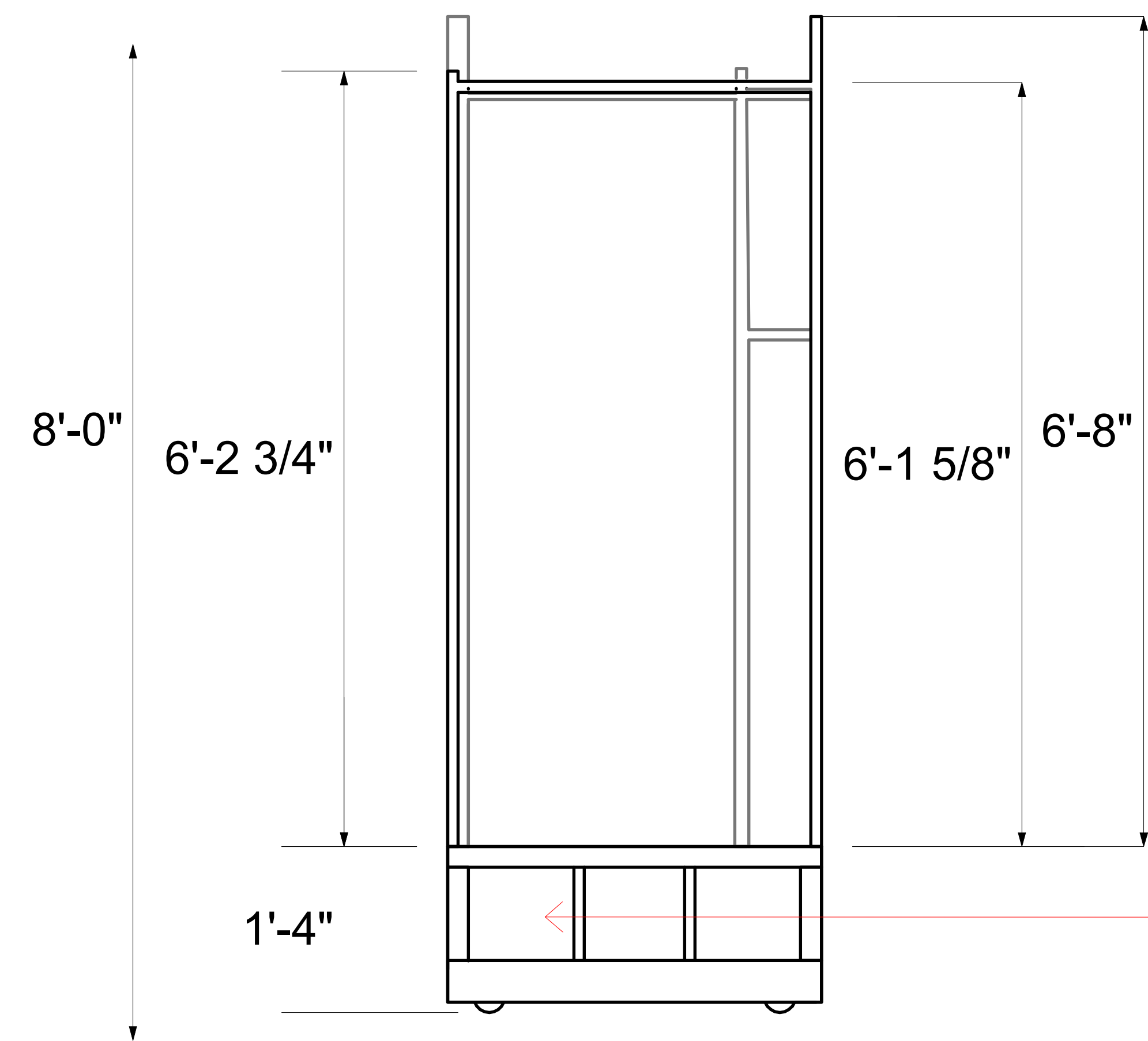
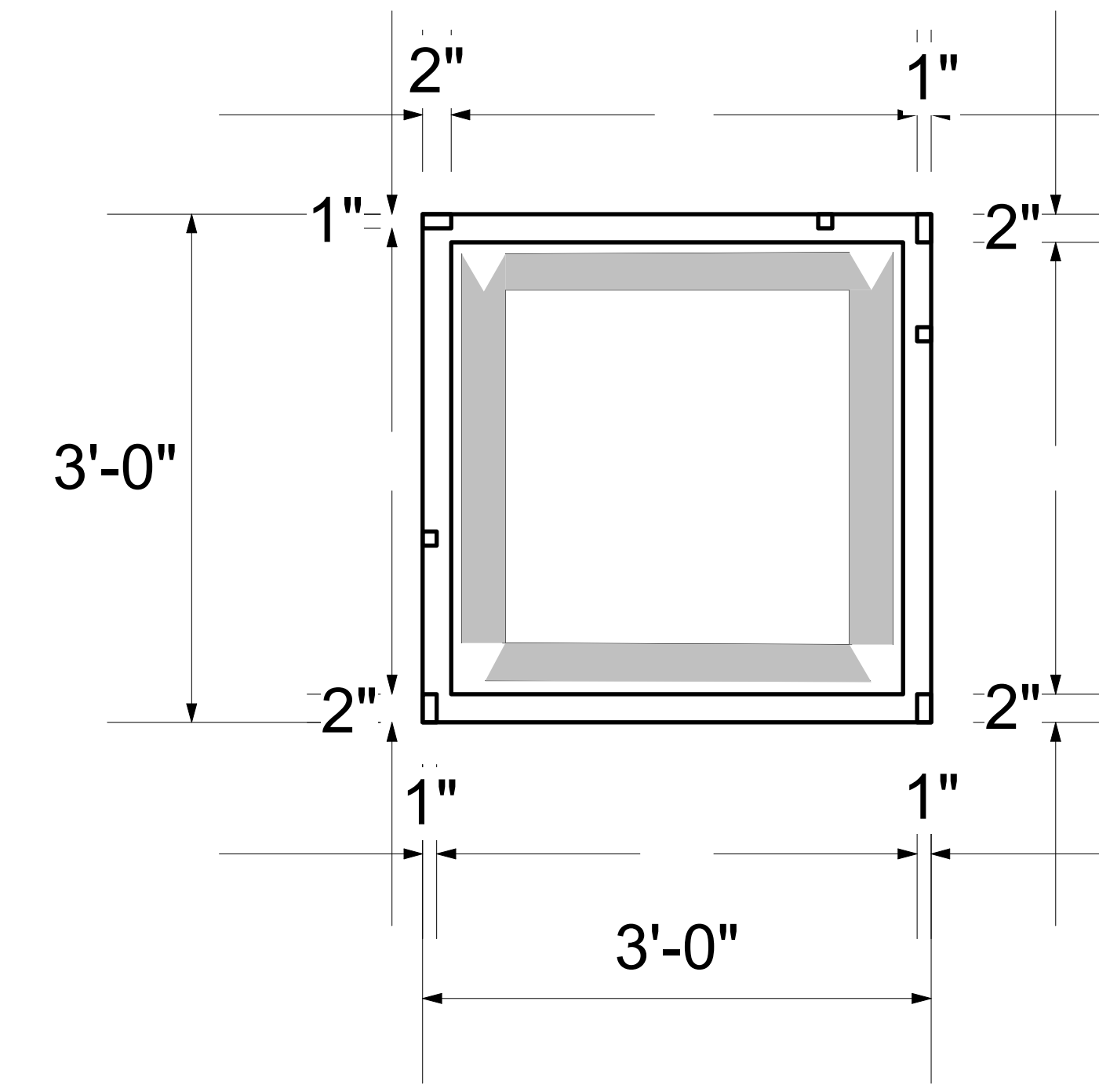
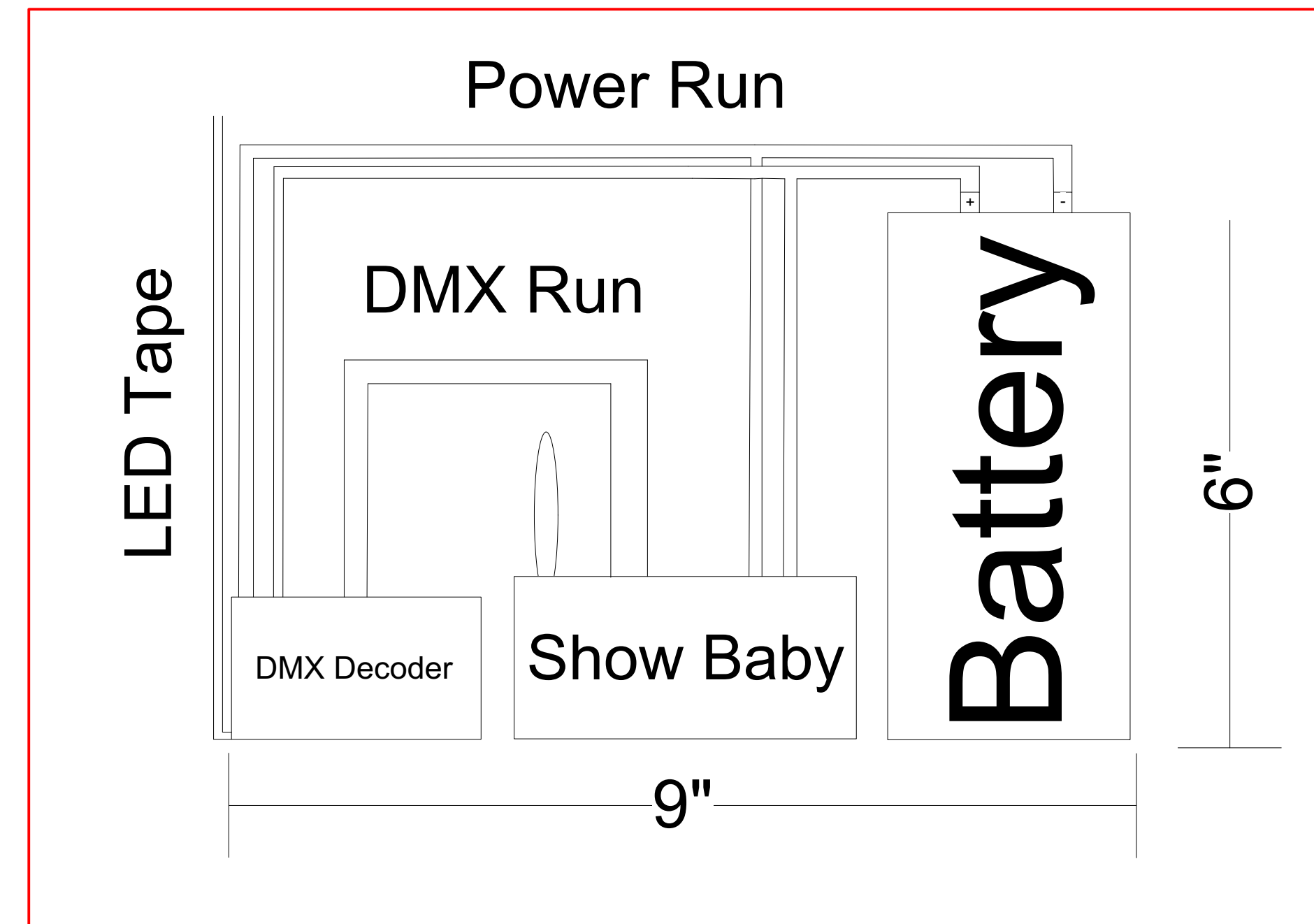


WITCH CUBES



FRONT VIEW

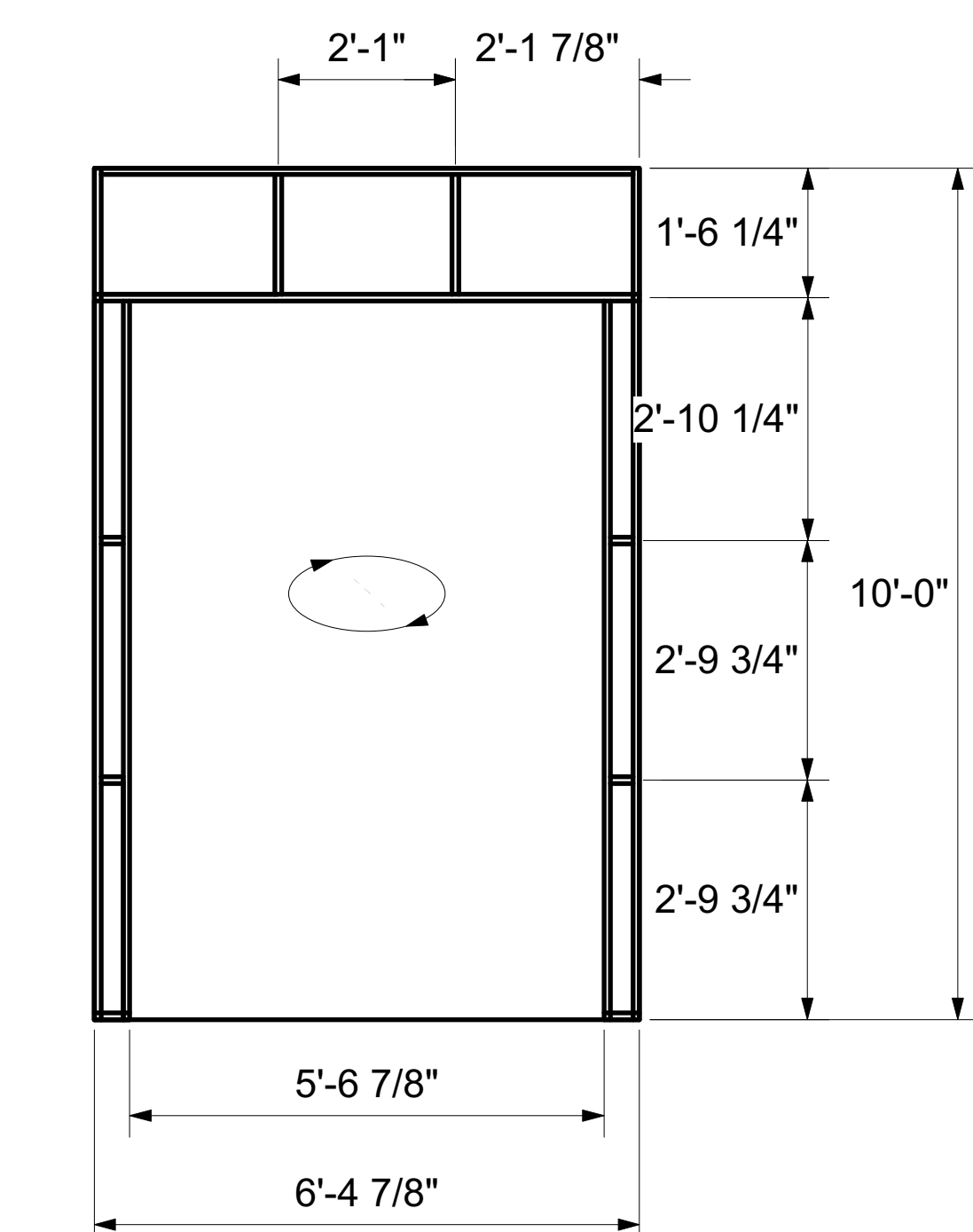


TOP VIEW

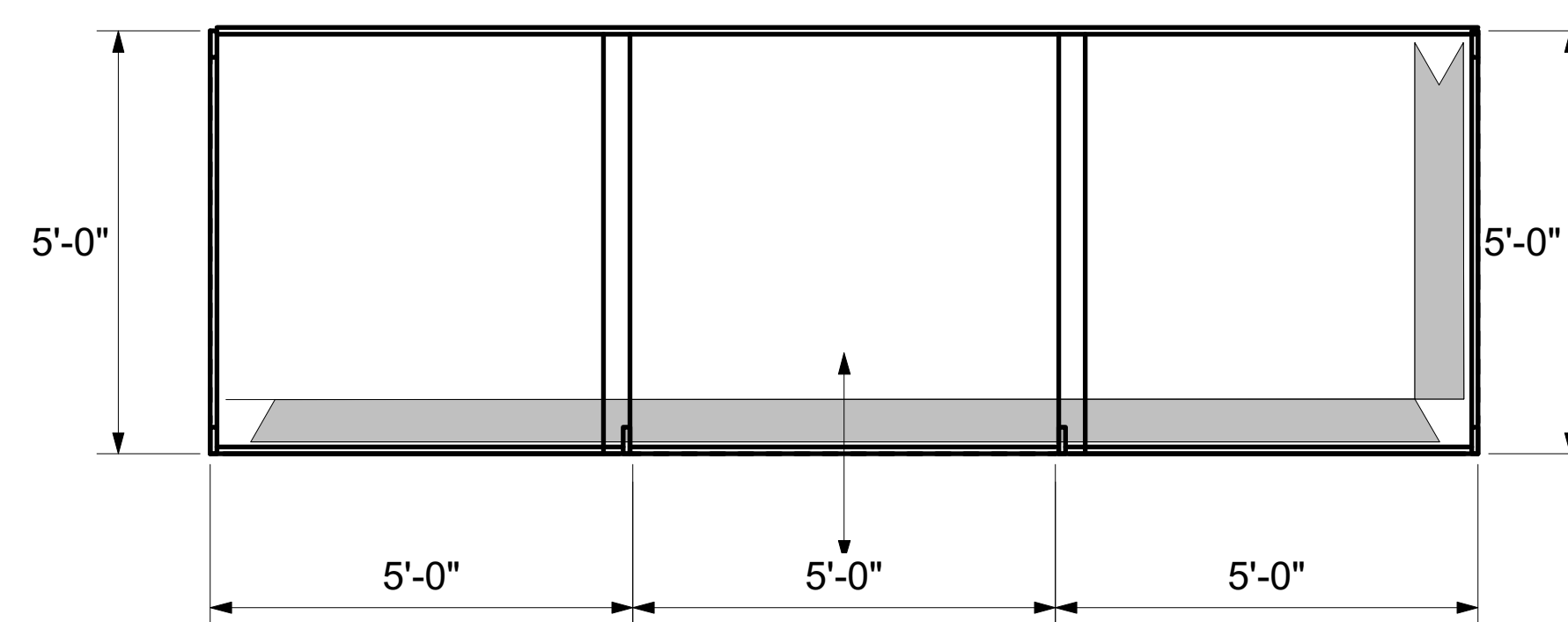
NOTES: (THERE ARE 3 CUBES)

- DEVICES PLACED UNDER THE PLYWOOD (IN THE COMPARTMENT AT THE BOTTOM OF THE CUBE) SEE ARROW.
- POWER RUNS FROM BATTERY TO BOTH DECODER AND WIRELESS DMX SHOW BABY.
- WIRELESS DMX STARTS FROM THE SHOWBABY TRANSMITTER AT BOARD TO THE SHOWBABY RECEIVER AT CUBE.
- DMX GOES FROM SHOW BABY TO DMX DECODER.
- LED TAPE WIRE COLOR = CHANNEL IN DMX DECODER.
- RED = CH. 1
- GREEN = CH. 2
- BLUE = CH. 3
- BLACK = COMMON
- LED TAPE RUNS ALONG THE BOTTOM OF THE BOX FACING PLASTIC.
- EACH LED TAPE = 3 CONTROL CHANNELS.
- NEED CLARIFICATION PLEASE ASK DESIGNER OR ASSISTANT DESIGNER.
- NOT TO SCALE.

SR AND SL BOX



RIGHT SIDE VIEW

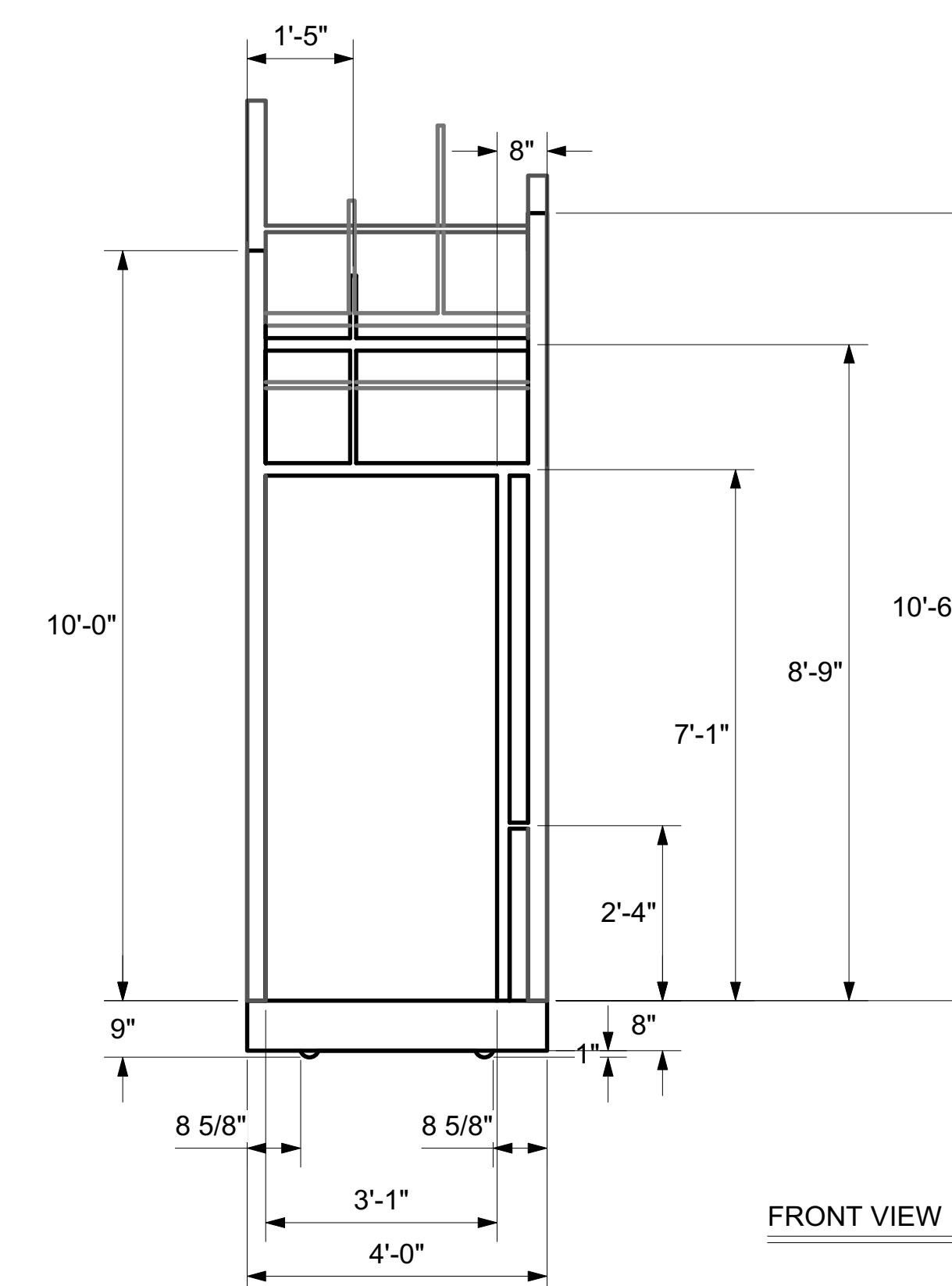


TOP VIEW

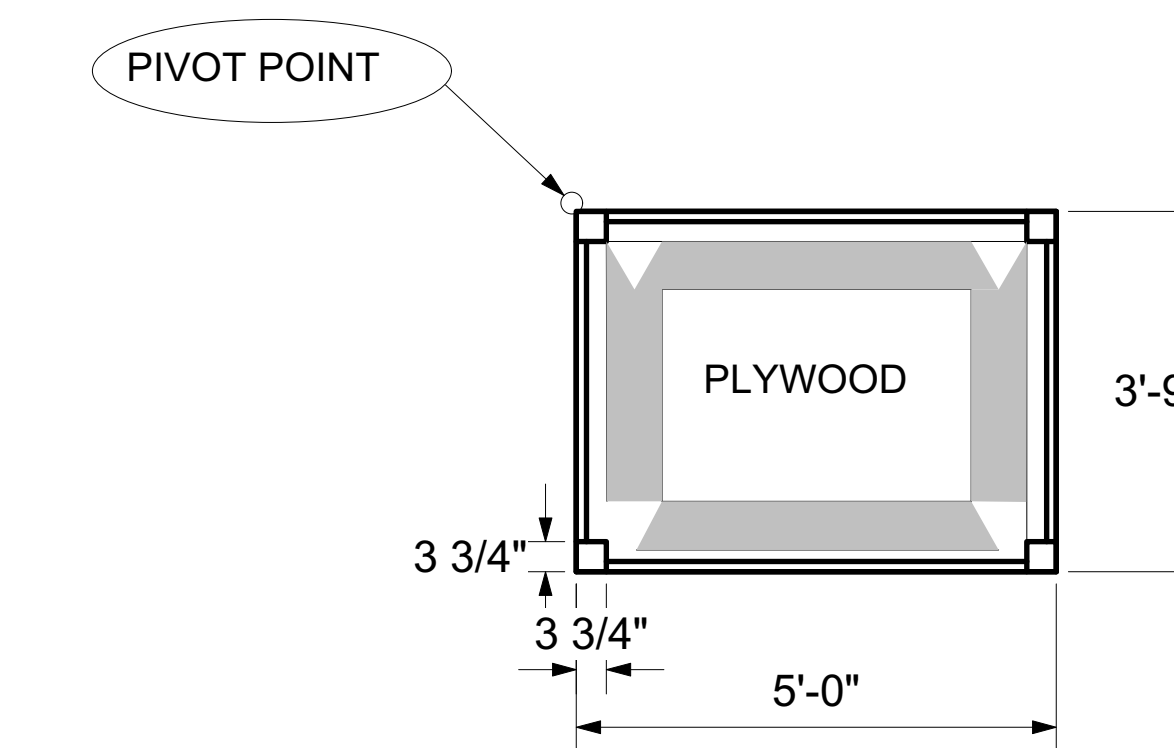
NOTES: (2 BOXES)

- DMX RUNS FROM DMX DECODER TO DMX RUN (NODE OR CABLE).
- 12V POWER SUPPLY RUNS THE POWER FOR DMX DECODER.
- DMX DECODER AND 12V POWER SUPPLY ATTACHED ABOVE HEAD HEIGHT.
- LED TAPE WIRE COLOR = CHANNEL IN DMX DECODER.
- RED = CH. 1
- GREEN = CH. 2
- BLUE = CH. 3
- BLACK = COMMON
- LED TAPE RUNS ALONG THE TOP OF THE BOX FACING THE PLASTIC.
- IF YOU NEED CLARIFICATION PLEASE ASK THE DESIGNER.

TOWERS



FRONT VIEW



TOP VIEW

NOTES: (4 TOWERS)

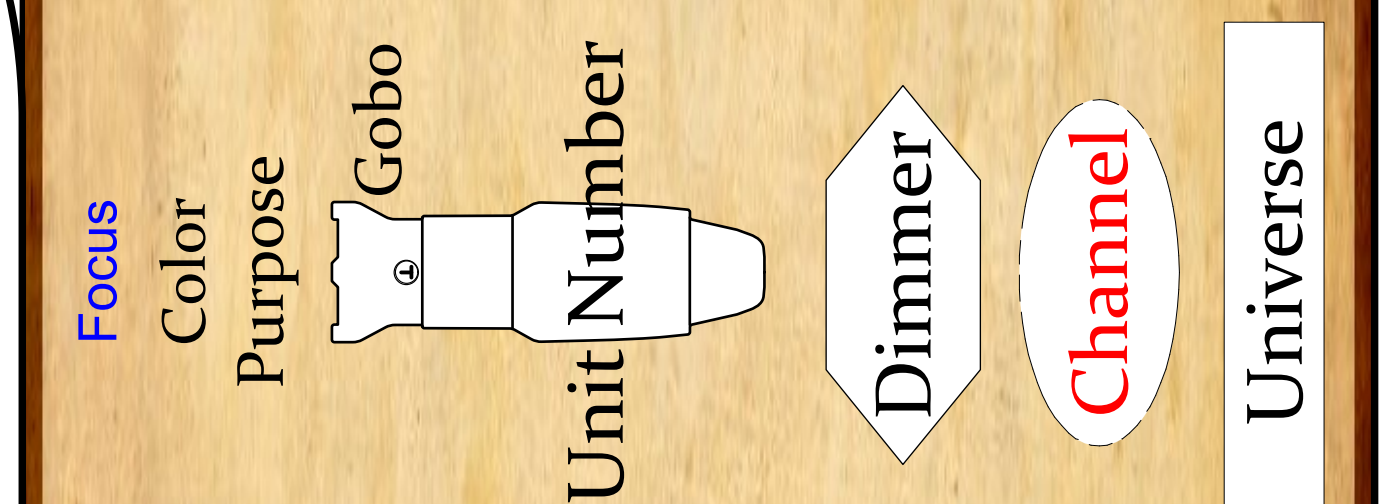
- DMX RUNS FROM DMX DECODER TO DMX RUN (NODE OR CABLE).
- 12V POWER SUPPLY RUNS THE POWER FOR DMX DECODER.
- DMX DECODER AND 12V POWER SUPPLY ATTACHED ABOVE HEAD HEIGHT.
- LED TAPE WIRE COLOR = CHANNEL IN DMX DECODER.
- RED = CH. 1
- GREEN = CH. 2
- BLUE = CH. 3
- BLACK = COMMON
- LED TAPE RUNS ALONG THE BOTTOM OF THE BOX FACING THE PLASTIC.
- LED TAPE RUNS FROM THE PIVOT POINT SO IT WILL NOT BREAK.
- IF YOU NEED CLARIFICATION PLEASE ASK THE DESIGNER.



Symbol Key

Light	
[Symbol]	3" Fresnel
[Symbol]	ARM 5 x 6
[Symbol]	ARM 6 x 9
[Symbol]	ARM 12
[Symbol]	ARM 16
[Symbol]	Etc Source 4 15"
[Symbol]	Etc Source 4 28"
[Symbol]	Etc Source 4 36"
[Symbol]	Etc Source 4 50"
[Symbol]	ETC Source4 70deg @ 575w
[Symbol]	House Light
[Symbol]	PAR64 MFL
[Symbol]	PAR64 WFL
[Symbol]	VL-500 Wash
[Symbol]	LED Tape
[Symbol]	Hazer
[Symbol]	Fogger
[Symbol]	12" Side Arm
[Symbol]	Gobo

TYPICAL



School of THEATRE & DANCE
Kent State University

NOTES:

- ALL ALTMANS GET R119 WITH COLOR.
- FINAL PLACEMENT OF PRACTICALS DETERMINED AT FOCUS.
- PLEASE HAVE EXTRA R119 AND R32 AT FOCUS.
- PLEASE HAVE BARN DOORS/ TOP HATS READY AT FOCUS.
- ALL OUTER RING INSTRUMENTS YOKED OUT FROM PIPE.
- WORKLIGHTS AND TOP ARE TWOFERED (AS CIRCUITS ALLOW).
- ALL LIGHTS SHOULD BE SHUTTER SHARP THEN FOCUSED.
- ALL LIGHTS 18" APART UNLESS NOTED OTHERWISE.
- ALL 3" FRESNELS ARE MOUNTED UNDER THE CATWALK.
- ALL 3" FRESNELS ARE POSITIONED ON DOWNSTAGE EDGE
- FINAL PLACEMENT OF FOGGER DETERMINED AT FOCUS.
- DIMMERS 189,190,191,192 ARE TO BE SWITCHED TO CONSTANTS.
- CHANNELS 229 AND 237 & 70 DEGREE S4'S ARE SEARCHANGERS

Lighting Designer:

Cory Sprinkles

Assistant Lighting Designer:

Rachel Holcomb

Director: Fabio Polanco

ME: Jonathon Frost

Drawn By: C.S. R.H. J.F.

Scale = 1/2" = 1'

Practicals

Date: 4/29/17

Version: 15.1

Plate

3

of 4