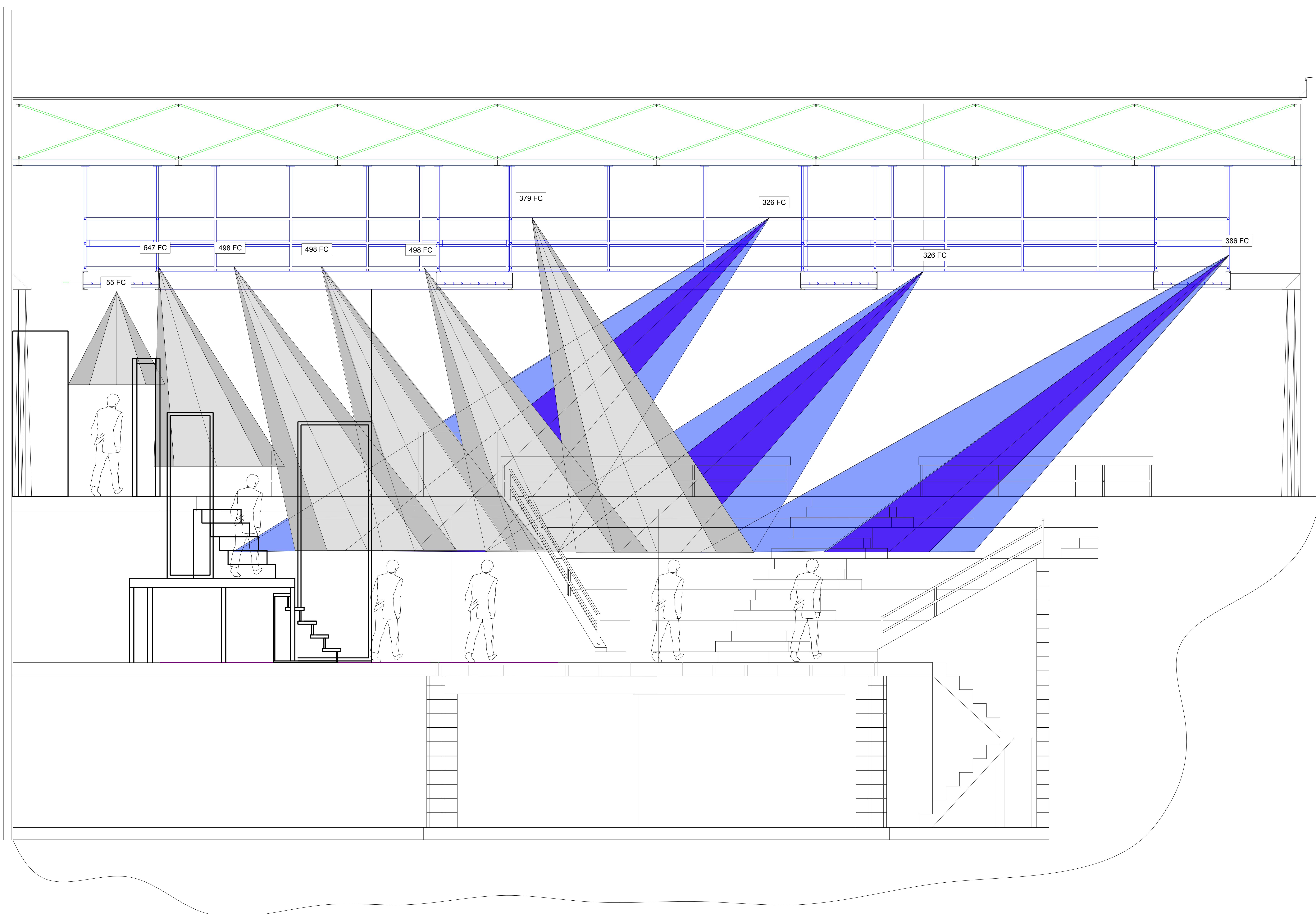


Macbeth



Symbol Key

Light	
	A84.5 x 8
	A85 x 9
	A86x12
	A88x16
	Etc Source 4 10"
	Etc Source 4 26"
	Etc Source 4 36"
	Etc Source 4 50"
	ETC Source4 70deg @ 575w
	House Light
	PAR64 MFL
	PAR64 WFL
	VL-500 Wash
	LED Tape
	Hazer
	Fogger
	12' Side Arm
	GOBO

TYPICAL

Focus
Color
Purpose
Unit Number
Dimmer
Channel
Universe

School of THEATRE & DANCE

Kent State University

- NOTES:**
- ALL ALTMANS GET R119 WITH COLOR.
 - FINAL PLACEMENT OF PRACTICALS DETERMINED AT FOCUS.
 - PLEASE HAVE EXTRA R119 AND R132 AT FOCUS.
 - PLEASE HAVE BARN DOORS/ TOP HATS READY AT FOCUS.
 - ALL OUTER RING INSTRUMENTS YOKED OUT FROM PIPE.
 - WORKLIGHTS AND TOP ARE TWOFERED (AS CIRCUITS ALLOW).
 - ALL LIGHTS SHOULD BE SHUTTER SHARP THEN FOCUSED.
 - ALL LIGHTS 18" APART UNLESS NOTED OTHERWISE.
 - ALL 3" FRESNELS ARE MOUNTED UNDER THE CATWALK.
 - ALL 3" FRESNELS ARE POSITIONED ON DOWNSTAGE EDGE.
 - FINAL PLACEMENT OF FOGGER DETERMINED AT FOCUS.
 - DIMMERS 189,190,191,192 ARE TO BE SWITCHED TO CONSTANTS.
 - CHANNELS 229 AND 237 & 70 DEGREE S4'S ARE SEACHANGERS

Lighting Designer:
Cory Sprinkles

Assistant Lighting Designer:
Rachel Holcomb

Director: Fabio Polanco

ME: Jonathon Frost

Drawn By: C.S. R.H. J.F.

Scale = 1/2" = 1'

Section Plot Plate
Date: 4/29/17
Version: 15.1